



Aadhav Green Power Private Limited

Solar Rooftop Profile



Services

1. Solar Power Plant EPC
2. Solar Rooftop Turnkey Solutions
3. Solar Financing
4. Solar Products – One Stop Shop
5. Solar Operation & Maintenance

Solutions

1. On-Grid Solar Power Plants
2. Off-Grid Solar Power Plants
3. Hybrid Solar Power Plants
4. Solar Water Pumps
5. DIY Kits

Think, Act & Save for a Sustainable **Green** Future

Reach us At



Plot No.95, 1st Floor
Developed Electronic Industrial Estate
Perungudi, Chennai – 600 096
India



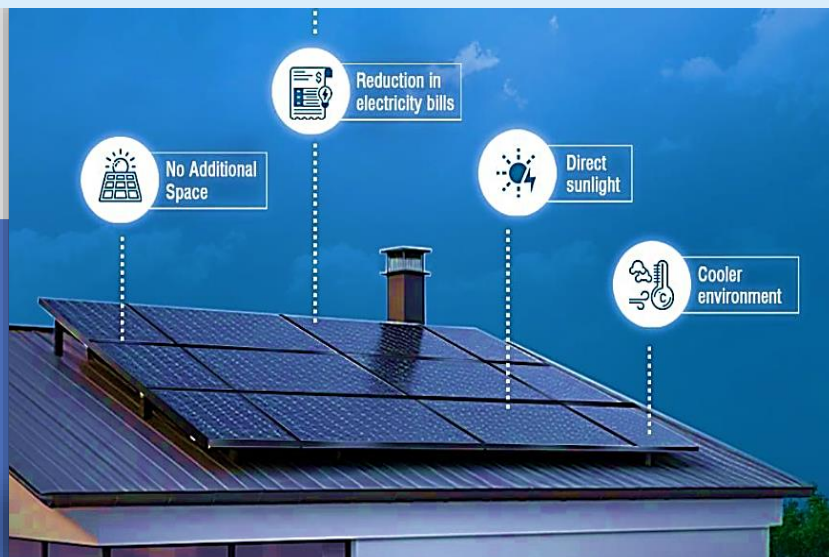
agppl.solarepc@gmail.com /
sales@aadhavgreen.com



044-4260 7074 / +91-97150 13556



www.aadhavgreen.com



ASK OUR EXPERTS!



About AGPPL

Aadhav Green Power Private Limited is a forward-thinking enterprise dedicated to the promotion and implementation of sustainable energy solutions established in **2012**. As a premier provider of solar panel installation EPC. We are at the forefront of the renewable energy industry, delivering comprehensive and customized solar power solutions to meet the diverse needs of our clients.

Why AGPPL ?

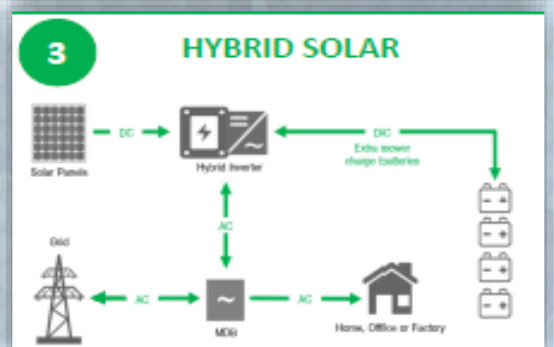
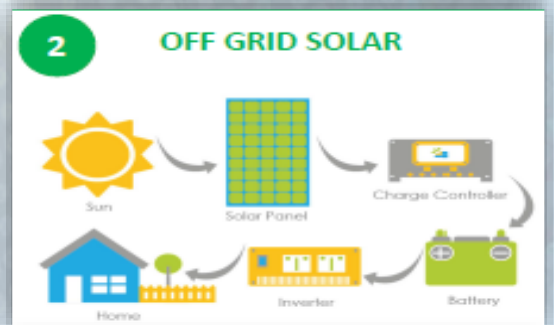
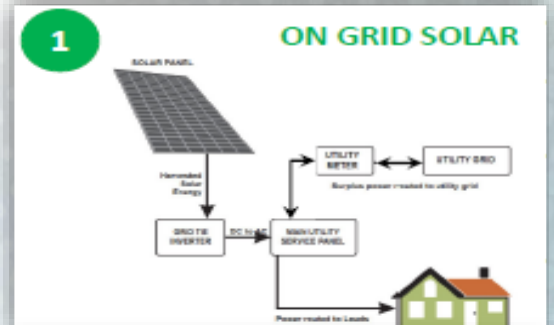
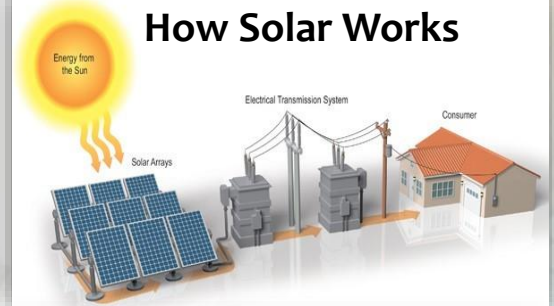


Why go Solar?

Smart Way To Solve Challenges ———



How Solar Works



Corporate Address



Plot No.95, 1st Floor
Developed Electronic Industrial Estate
Perungudi, Chennai – 600 096
India



agppl.solarepc@gmail.com /
sales@aadhavgreen.com



+044-4260 7074 / +91-97510 13556



www.aadhavgreen.com



Net Feed In Tariff	Net Metering Tariff
HT	LT
Grid Connected rooftop system can export power	Grid Connected rooftop system can export power
Existing meter replaced with bidirectional meter	LT EB meter will be reconfigured
The grid connected rooftop system can work on net metering basis wherein the beneficiary pays to the utility on net meter reading i.e. the difference between the import and the export energy.	Surplus/excess energy generated that is unutilized and that flows to the grid at the end of the billing period will be calculated at a tariff and credited to the consumer's account.
DG Sync can be done	DG Sync can be done

Solar Economics

Solar Plant 1MWAC: 1.1 MWDC			Cost	₹ 4,25,60,000	incl GST				
			Loan	₹ 3,40,48,000		10.0%	10		
			Equity	₹ 85,12,000					
						23%	59%		
Year	Generation	Unit Rate	Revenue	EMI	O&M Cost	Project IRR	Equity IRR	Cumulative	Eff Power Rate
						₹ -4,25,60,000	₹ -85,12,000		₹ 1.97
1	17,00,000	₹ 6.35	₹ 1,07,95,000	₹ 34,04,800	₹ 5,00,000	₹ 1,02,95,000	₹ 68,90,200	₹ 68,90,200	₹ 2.30
2	16,90,650	₹ 6.35	₹ 1,07,35,628	₹ 68,09,600	₹ 5,25,000	₹ 1,02,10,628	₹ 34,01,028	₹ 1,06,35,738	₹ 4.34
3	16,81,351	₹ 6.35	₹ 1,06,76,582	₹ 64,69,120	₹ 5,51,250	₹ 1,01,25,332	₹ 36,56,212	₹ 1,48,23,736	₹ 4.18
4	16,72,104	₹ 6.35	₹ 1,06,17,860	₹ 61,28,640	₹ 5,78,813	₹ 1,00,39,048	₹ 39,10,408	₹ 1,94,75,331	₹ 4.01
5	16,62,907	₹ 6.35	₹ 1,05,59,462	₹ 57,88,160	₹ 6,07,753	₹ 99,51,709	₹ 41,63,549	₹ 2,46,12,646	₹ 3.85
6	16,53,761	₹ 6.35	₹ 1,05,01,385	₹ 54,47,680	₹ 6,38,141	₹ 98,63,244	₹ 44,15,564	₹ 3,02,58,843	₹ 3.68
7	16,44,666	₹ 6.35	₹ 1,04,43,627	₹ 51,07,200	₹ 6,70,048	₹ 97,73,580	₹ 46,66,380	₹ 3,64,38,164	₹ 3.51
8	16,35,620	₹ 6.35	₹ 1,03,86,188	₹ 47,66,720	₹ 7,03,550	₹ 96,82,637	₹ 49,15,917	₹ 4,31,75,990	₹ 3.34
9	16,26,624	₹ 6.35	₹ 1,03,29,063	₹ 44,26,240	₹ 7,38,728	₹ 95,90,336	₹ 51,64,096	₹ 5,04,98,885	₹ 3.18
10	16,17,678	₹ 6.35	₹ 1,02,72,254	₹ 40,85,760	₹ 7,75,664	₹ 94,96,590	₹ 54,10,830	₹ 5,84,34,659	₹ 3.01
11	16,08,781	₹ 6.35	₹ 1,02,15,756	₹ 37,45,280	₹ 8,14,447	₹ 94,01,309	₹ 56,56,029	₹ 6,70,12,421	₹ 2.83
12	15,99,932	₹ 6.35	₹ 1,01,59,570	₹ 0	₹ 8,55,170	₹ 93,04,400	₹ 93,04,400	₹ 7,96,67,442	₹ 0.53
13	15,91,133	₹ 6.35	₹ 1,01,03,692	₹ 0	₹ 8,97,928	₹ 92,05,764	₹ 92,05,764	₹ 9,28,56,578	₹ 0.56
14	15,82,381	₹ 6.35	₹ 1,00,48,122	₹ 0	₹ 9,42,825	₹ 91,05,297	₹ 91,05,297	₹ 10,66,04,704	₹ 0.60
15	15,73,678	₹ 6.35	₹ 99,92,857	₹ 0	₹ 9,89,966	₹ 90,02,891	₹ 90,02,891	₹ 12,09,37,830	₹ 0.63
16	15,65,023	₹ 6.35	₹ 99,37,896	₹ 0	₹ 10,39,464	₹ 88,98,432	₹ 88,98,432	₹ 13,58,83,154	₹ 0.66
17	15,56,415	₹ 6.35	₹ 98,83,238	₹ 0	₹ 10,91,437	₹ 87,91,801	₹ 87,91,801	₹ 15,14,69,112	₹ 0.70
18	15,47,855	₹ 6.35	₹ 98,28,880	₹ 0	₹ 11,46,009	₹ 86,82,871	₹ 86,82,871	₹ 16,77,25,438	₹ 0.74
19	15,39,342	₹ 6.35	₹ 97,74,821	₹ 0	₹ 12,03,310	₹ 85,71,512	₹ 85,71,512	₹ 18,46,83,222	₹ 0.78
20	15,30,876	₹ 6.35	₹ 97,21,060	₹ 0	₹ 12,63,475	₹ 84,57,585	₹ 84,57,585	₹ 20,23,74,967	₹ 0.83
21	15,22,456	₹ 6.35	₹ 96,67,594	₹ 0	₹ 13,26,649	₹ 83,40,945	₹ 83,40,945	₹ 22,08,34,661	₹ 0.87
22	15,14,082	₹ 6.35	₹ 96,14,422	₹ 0	₹ 13,92,981	₹ 82,21,441	₹ 82,21,441	₹ 24,00,97,835	₹ 0.92
23	15,05,755	₹ 6.35	₹ 95,61,543	₹ 0	₹ 14,62,630	₹ 80,98,912	₹ 80,98,912	₹ 26,02,01,639	₹ 0.97
24	14,97,473	₹ 6.35	₹ 95,08,954	₹ 0	₹ 15,35,762	₹ 79,73,192	₹ 79,73,192	₹ 28,11,84,913	₹ 1.03
25	14,89,237	₹ 6.35	₹ 94,56,655	₹ 0	₹ 16,12,550	₹ 78,44,105	₹ 78,44,105	₹ 30,30,88,264	₹ 1.08

Our Premium Clients





Our Energy Harvesters

240kW @ Kancheepuram



150kW @ Oragadam



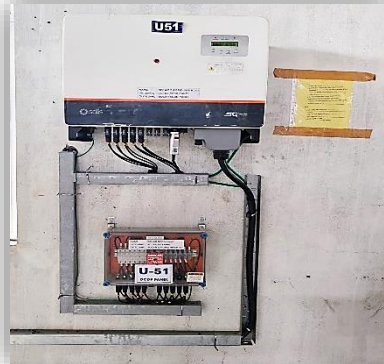
300kW @ Salem



Customized Solutions: Sheet Mounted -Solex Solar Panels & Solis Inverter with Walkways & Hand-Rails Supported



Tilted- Roof top Solar Plant



RCC Mounted GIS



Bi-facial Module Type

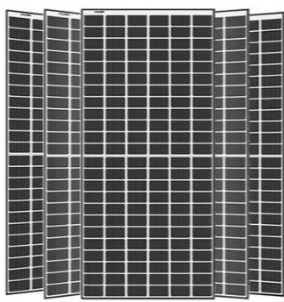


Operation & Maintenance Glimpse





Our Products & Leading Features



Solar Panels: Which is Best & Advanced?

- **Bi-facial** : 20% more efficiency than a mono-facial one
- **Top Con** : Optimal efficiency, superior performance, and long-lasting.
- **Mono-PERC**: Basic type and Less expensive with good collectivity.

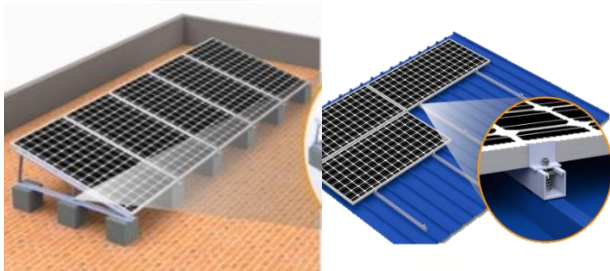
Warranty: 25 years



Solar Inverter

- Superior Efficiency
- High Reliability
- Intelligent Maintenance
- 4.Fuse free design to avoid hazard
- Intelligent Cooling & String Monitoring

Warranty: 5-15 Years



Solar Structures

- Aluminium 6036 T6
- Hot Dip Galvanized
- 180KMPH Wind Load withstanding Passed
- Reverse Tilt & Reverse Orientation Compatible Models



DC Distribution Panel

- Fuses & Terminals
- MCB/MCCB Contactor
- (Trip Curve, Perfect Breaking Capacity, Current Rating)
- Enhanced Earth fault protection unit
- IP protection rating up to IP67 levels



AC Distribution Panel

- Fuses & Terminals
- MCB/MCCB Contactor
- AC SPD class B, SPD class B+C, ON change over
- Overcurrent Protection Devices (OCPDs)



MC4 Connectors

- Exclusively designed for outside use IP67
- strong snap-in and lock mechanism
- flame-resistant polymer, which can withstand UV exposure
- detachable built-in safety clamps as they provide extra accidental disconnect



Solar Cables DC & AC

- Electron beam cross linked compound XLPE
- UV, Ozone, Temperature & Hydrolysis resistant
- Flame Retardant, Low Smoke
- Excellent Encapsulation
- Very long / Service life > 25



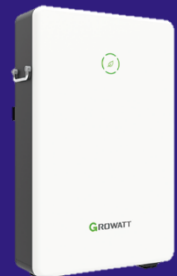
Earthing Rods & Lighting Arrester

- Galvanized Steel, Copper Bond, Solid Copper, Steel
- Enhances the lifespan of the PV system by arresting degradation
- Provides safety against lightning strike
- mitigates the risk of fire.
- Franklin Rod (Conventional), ESE (Advanced)
- Increased Protection Radius
- UV Treated Nylon Insulated Base for better isolation and longer life



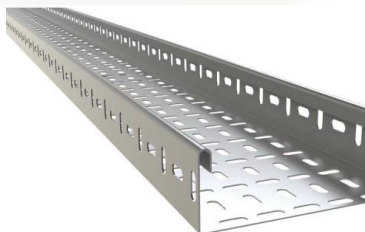
Solar Batteries

- High Energy Density
- Long Life Cycle Design
- Low Self Discharge Rate C-10 Rated
- No Acid Stratification
- Fast Charging
- Spill proof & Leak Proof Configurations



Walkway & Hand-rails

- Rust, Fire and UV Resistance
- Permanent Slip Resistance
- Non-sparking & Non-Conductive
- Light Weight & High Load Bearing Capacity
- Weather Resistance



Cable Trays

- Perforated Cable Tray
- Pre-Galvanized / Stainless Steel / Aluminium
- Types: Perforated & Ladder Type
- Self-Anodizing Finish & Mirror Finish
- Heavy Duty



Glands

- Explosion proof
- Designed for both armored and non-armored cables
- high IP safety standard is achieved with the integrated sealing lip
- Double Compression